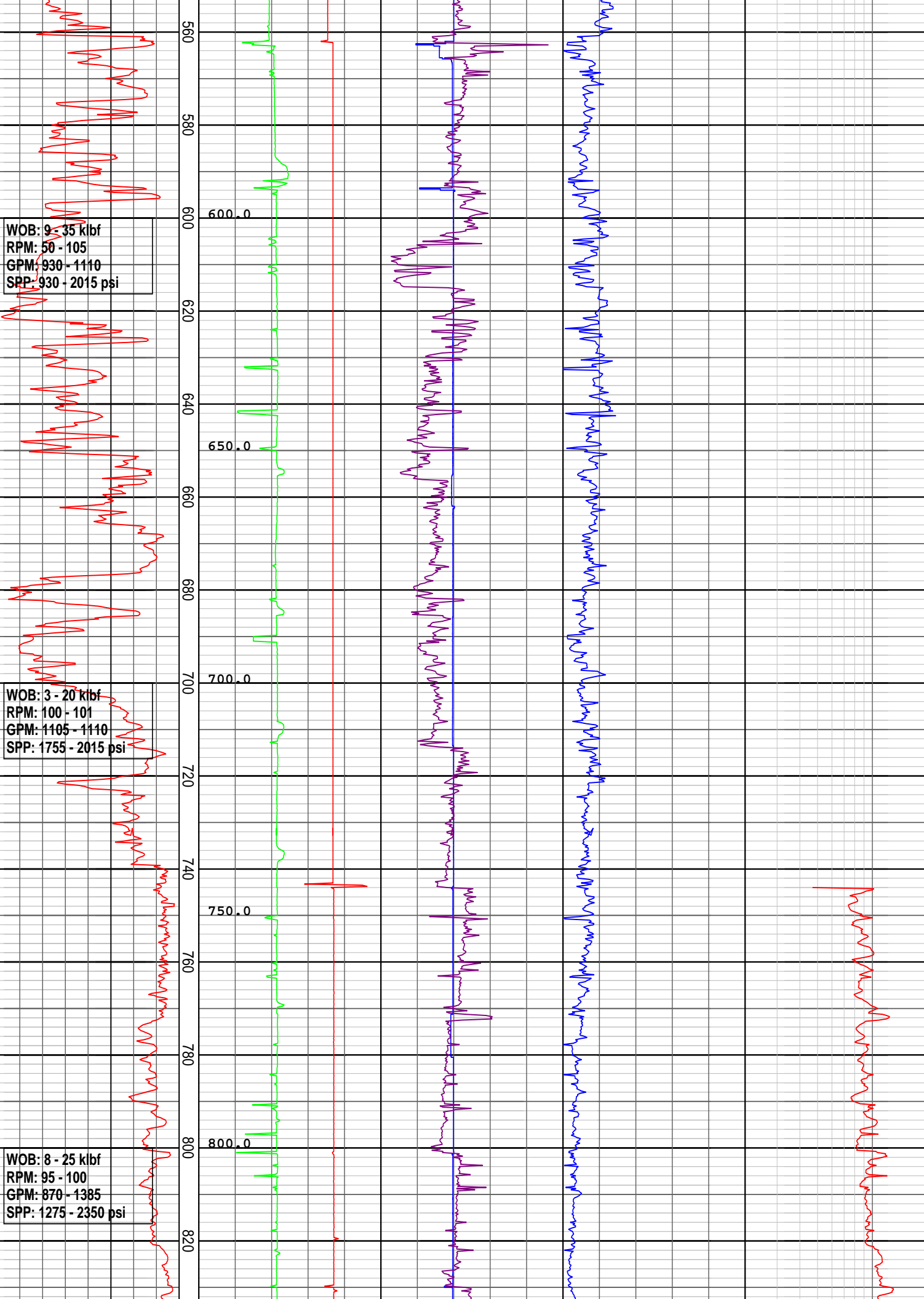


WOB: 9 - 35 klf  
RPM: 50 - 105  
GPM: 930 - 1110  
SPP: 930 - 2015 psi

WOB: 3 - 20 klf  
RPM: 100 - 101  
GPM: 1105 - 1110  
SPP: 1755 - 2015 psi

WOB: 8 - 25 klf  
RPM: 95 - 100  
GPM: 870 - 1385  
SPP: 1275 - 2350 psi



560  
580  
600  
620  
640  
660  
680  
700  
720  
740  
760  
780  
800  
820

600.0  
650.0  
700.0  
750.0  
800.0

16/02/2008

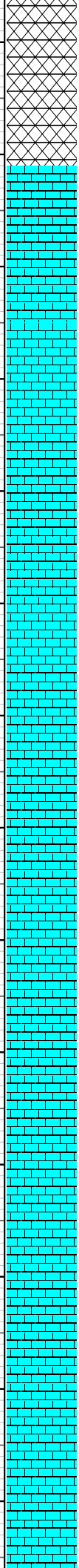
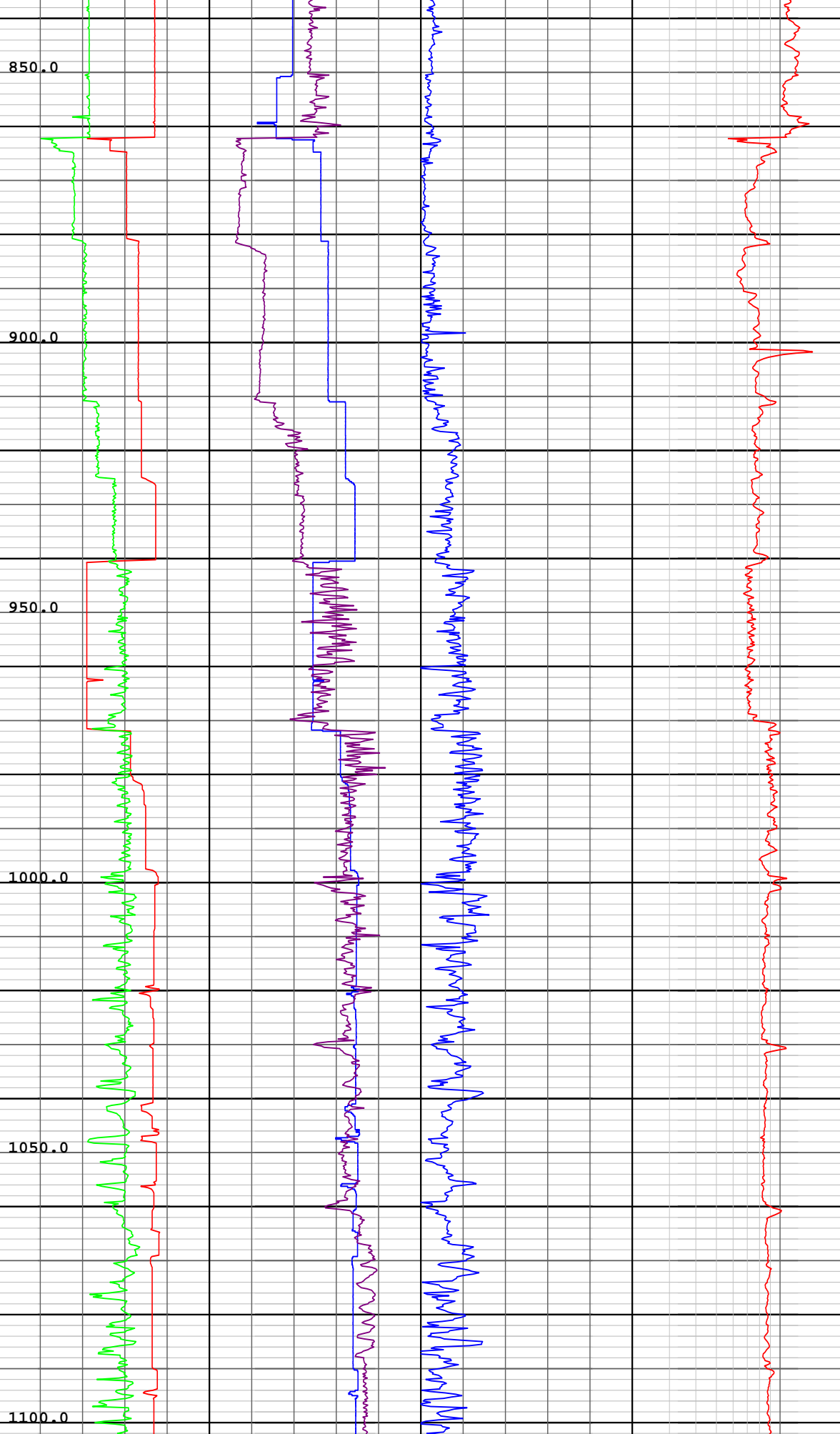
Set 339 mm (13-3/8")  
Csg @ 857.3 m

NB3: 308 mm (12 1/4")  
Smith  
Serial: SGC985  
Type: PDC Fixed Cutter  
Jets: 6 X18,  
Depth In: 862.0 mMDRT  
Depth out: 1797.0  
mMDRT  
WOB: 59.35 k lbf in 34.8  
RPM: 28 - 100  
GPM: 633 - 1150  
SPP: 1020 - 2226 psi

WOB: 8 - 33 k lbf  
RPM: 33 - 55  
GPM: 630 - 1135  
SPP: 2000 - 3170 psi

WOB: 20 - 33 k lbf  
RPM: 50 - 53  
GPM: 1000 - 1150

840  
860  
880  
900  
920  
940  
960  
980  
1000  
1020  
1040  
1060  
1080  
1100





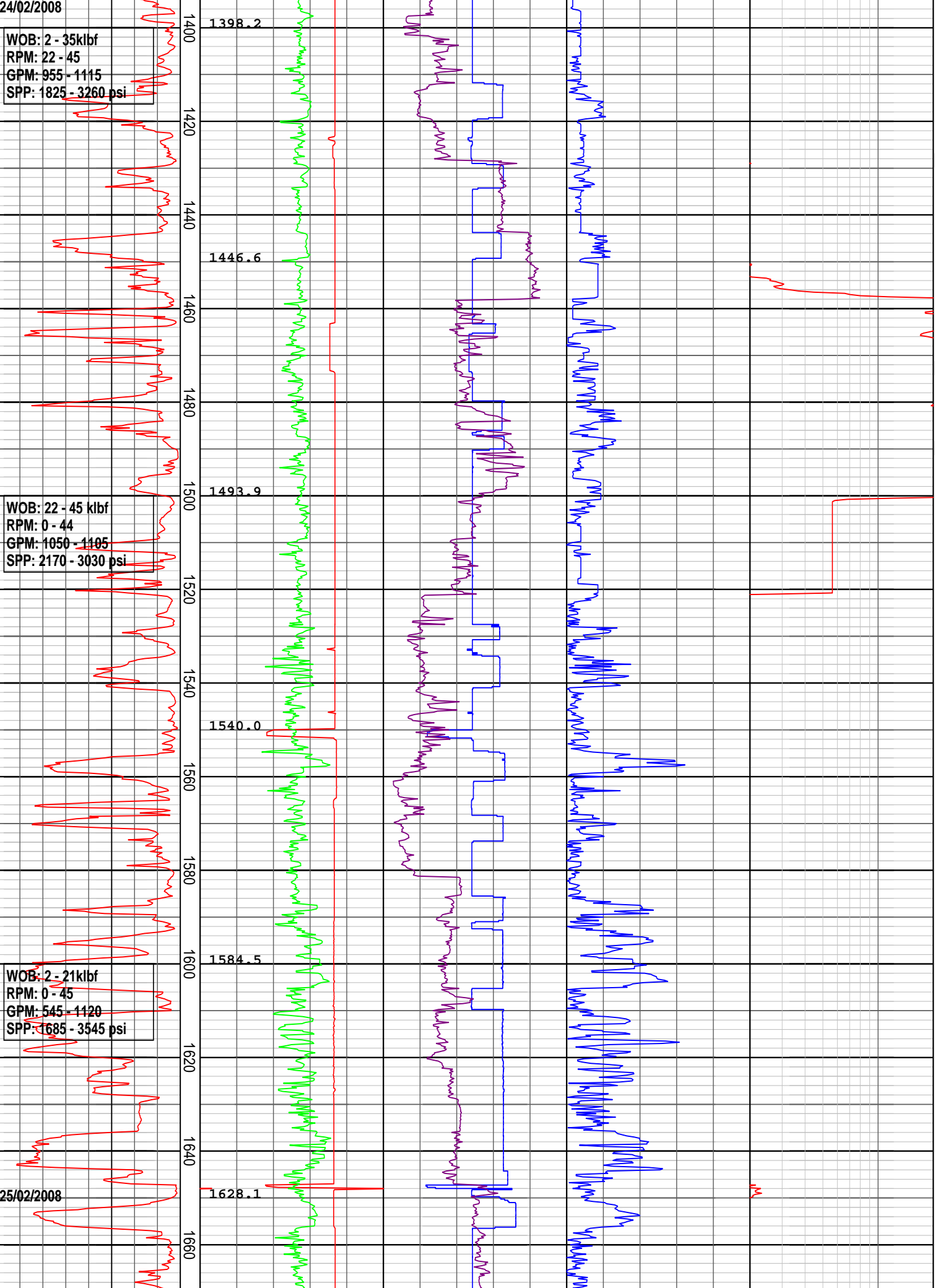
24/02/2008

WOB: 2 - 35klbf  
RPM: 22 - 45  
GPM: 955 - 1115  
SPP: 1825 - 3260 psi

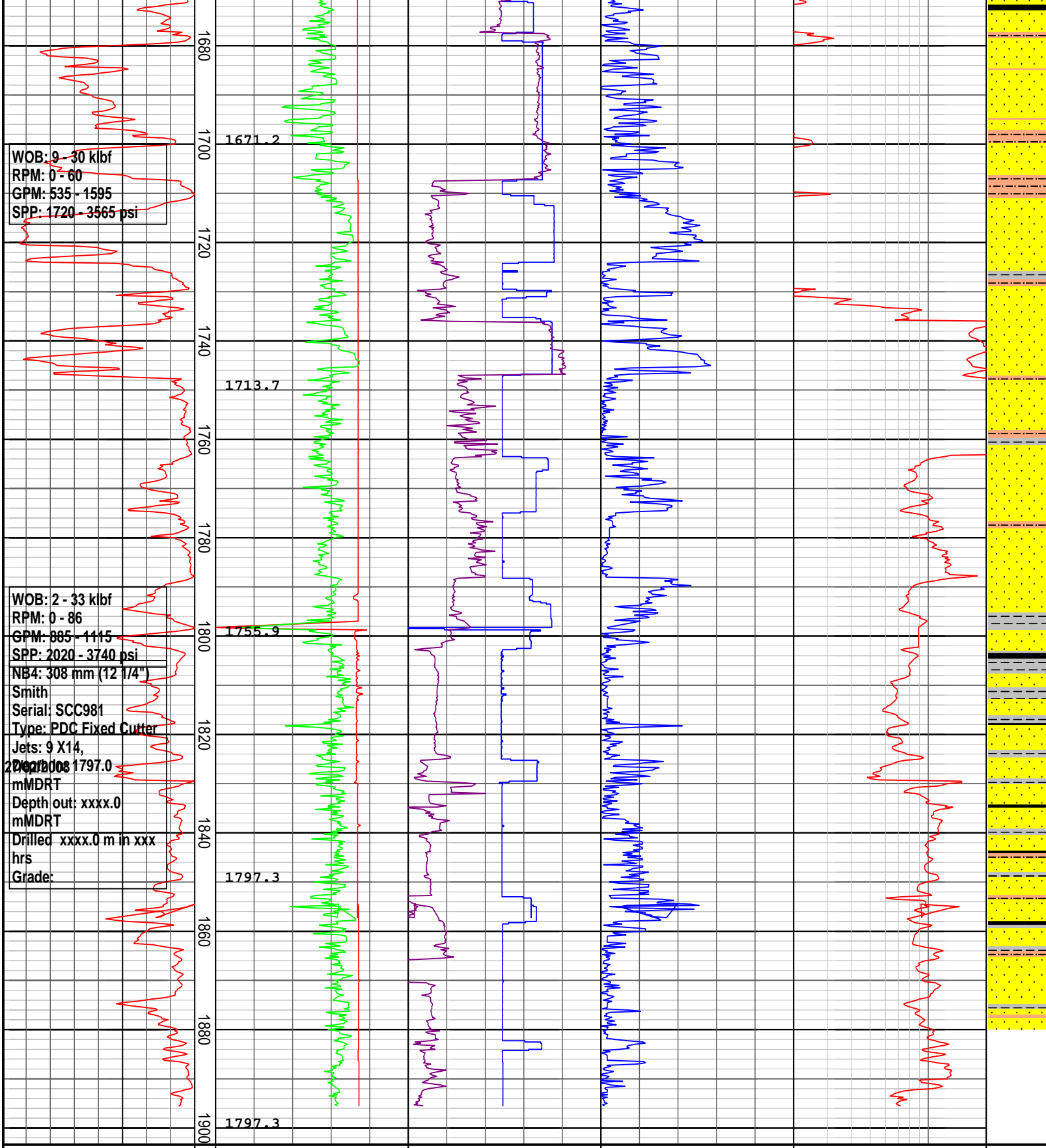
WOB: 22 - 45 klbf  
RPM: 0 - 44  
GPM: 1050 - 1105  
SPP: 2170 - 3030 psi

WOB: 2 - 21klbf  
RPM: 0 - 45  
GPM: 545 - 1120  
SPP: 1685 - 3545 psi

25/02/2008







**DRILLING DATA PLOT**

|  |                                  |                            |                       |         |                       |
|--|----------------------------------|----------------------------|-----------------------|---------|-----------------------|
| ROP (m/hr)                                 | FLOW IN (gpm)                    | RPM Avg                    | TORQUE Avg (kft-lb)   | DXC     | INTERPRETED LITHOLOGY |
| 200   175   150   125   100   75   50   25 | 300   600   900   1200   1500    | 50   100   150   200   250 | 5   10   15   20   25 | 0.2   2 |                       |
|  | STANDPIPE (psi)                  | WOB Avg (klbs)             |                       |         |                       |
|  | 1000   2000   3000   4000   5000 | 8   16   24   32   40      |                       |         |                       |
|  | VDEPTH                           |                            |                       |         |                       |

MD meters 1:1000